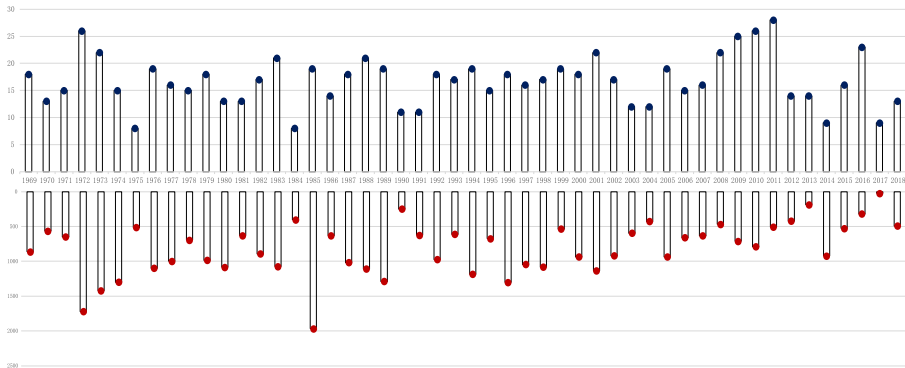


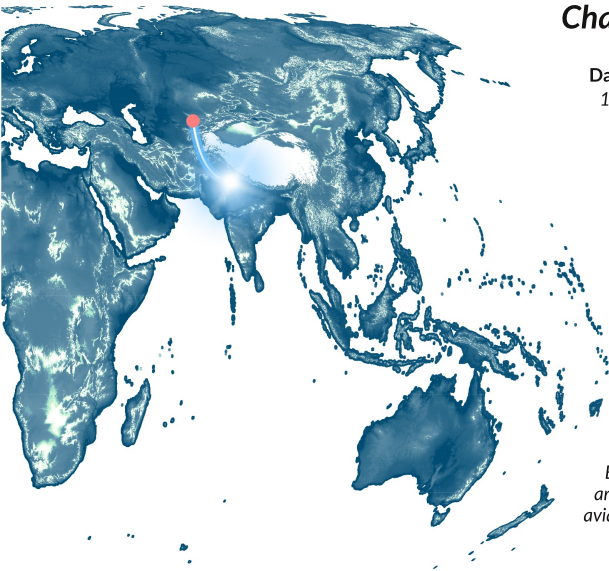
The Great Airliner Crash Events



Statistic on Airliner Crash in last 50 years (1969-2018)

The average number of airliner crash events in the past 50 years(1969-2018) is 16.59, of fatalities is 804.05. Although the number of crash events didn't show a great decline during this period, the mortality rate from Airliner Crash event got a certain decreasement.





Charkhi Dadri mid-air collision

Date

12 November, 1996

Flight origin

Indira Gandhi International Airport, Delhi, India(1)

Shymkent International Airport, Kazakhstan(2)

Destination

Osaka International Airport(1)

Indira Gandhi International Airport, Delhi, India(2)

Crash Site

Charkhi Dadri, Haryana, India

Charkhi Dadri mid-air collision: Saudi Arabian Airlines Flight 763, a Boeing 747, collides in mid-air with Air Kazakhstan Flight 1907, an Ilyushin Il-76, near Charkhi Dadri, India. All 312 on board the Boeing 747 and all 37 on board the Ilyushin Il-76 are killed. It is the deadliest mid-air collision in aviation history.

American Airlines Flight 11

Date

September 11, 2001

Flight origin

Logan International Airport, Boston

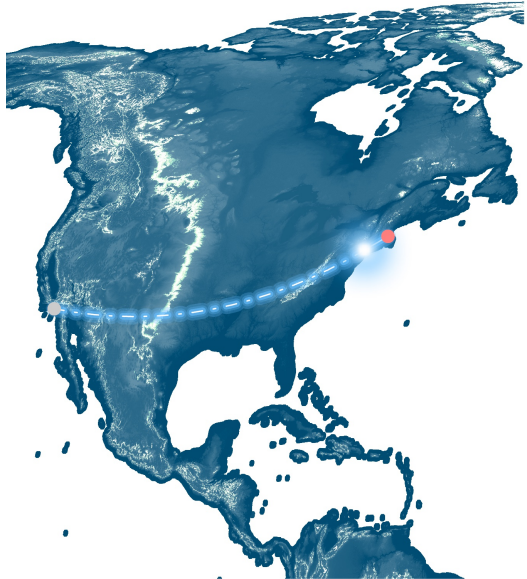
Destination

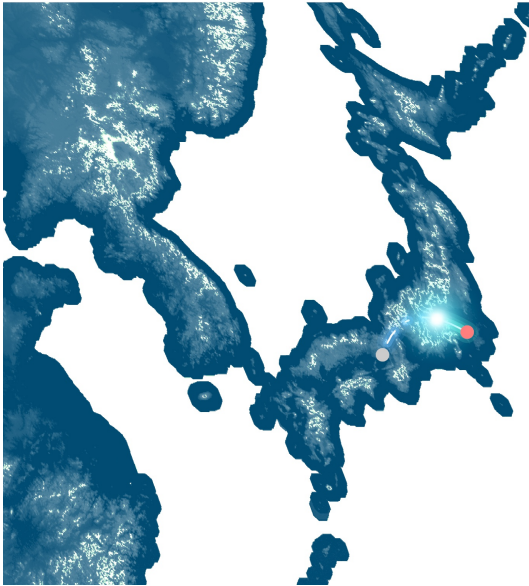
Los Angeles International Airport

Crash Site

North Tower of the World Trade Center, New York City, U.S

American Airlines Flight 11, a Boeing 767-200ER with 92 people on board, is hijacked after taking off from Boston, and is flown into the north tower of the World Trade Center in New York City; all on board are killed as well as around 1600 people on the ground and in the building; the collapse of both towers brings the total death toll from the two crashes to at least 2,763, the deadliest disaster involving commercial aircraft.





Japan Airlines Flight 123

Date

August 12, 1985

Flight origin

Tokyo International Airport

Destination

Osaka International Airport

Crash Site

Mount Takamagahara, Japan

Japan Airlines Flight 123, a Boeing 747, crashes into Mount Osutaka after catastrophic failure of the pressure hull severs all hydraulic lines and renders the aircraft uncontrollable, killing 520 of 524 people on board. To date, it is the deadliest single-aircraft disaster in history.

Malaysia Airlines Flight 370

Date

8 March, 2014

Flight origin

Kuala Lumpur International Airport

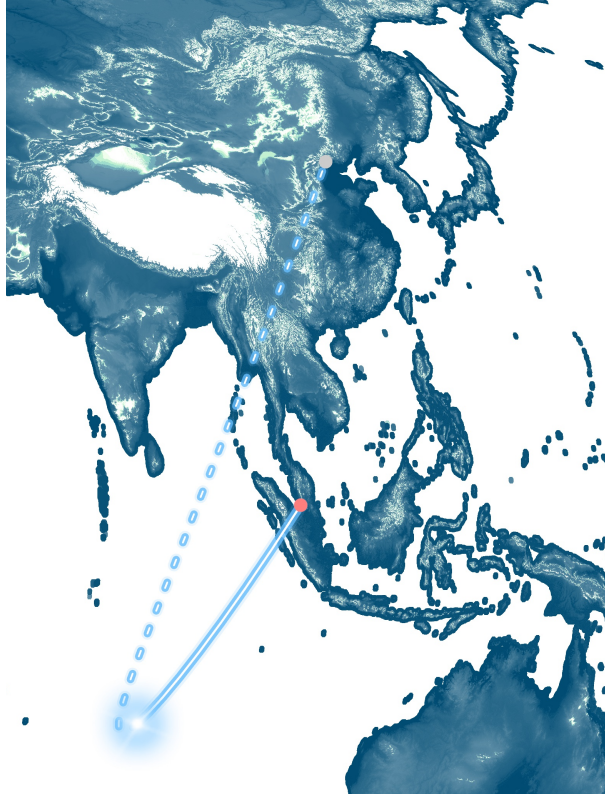
Destination

Beijing Capital International Airport

Crash Site

Southern Indian Ocean (presumed)

Malaysia Airlines Flight 370, a Boeing 777 en route from Kuala Lumpur to Beijing with 227 passengers and 12 crew on board, disappears from radar over the Gulf of Thailand. A wing part was later found in Réunion.



Malaysia Airlines Flight 17

Date

17 July 2014

Flight origin

Amsterdam Airport Schiphol, the Netherlands

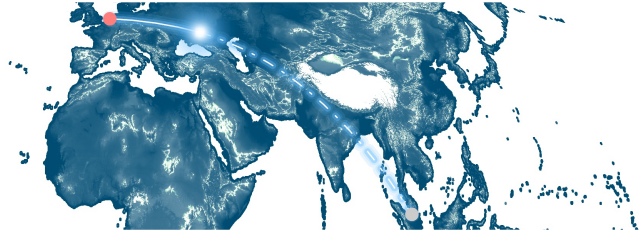
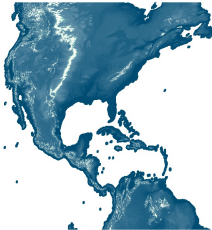
Destination

Kuala Lumpur International Airport, Malaysia

Crash Site

Near Hrabove, Donetsk Oblast, Ukraine

Malaysia Airlines Flight 17, a Boeing 777 en route from Amsterdam to Kuala Lumpur, is shot down over eastern Ukraine, killing all 283 passengers and 15 crew on board in the deadliest civilian airliner shutdown incident.





Data Source:

Nature Earth:<https://www.natureearthdata.com/downloads/10m-cross-blend-hypso/cross-blended-hypso/>

Wikipedia:https://en.wikipedia.org/wiki/List_of_accidents_and_incidents_involving_commercial_aircraft

Producer: Lin Zhu

Contact: lin.zhu1125@gmail.com